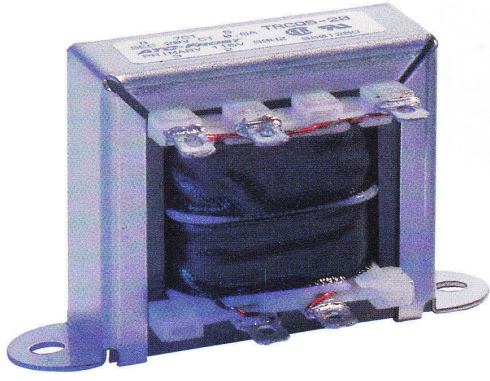


TRCQ Series

Channel Mounting - Open Style - Terminals

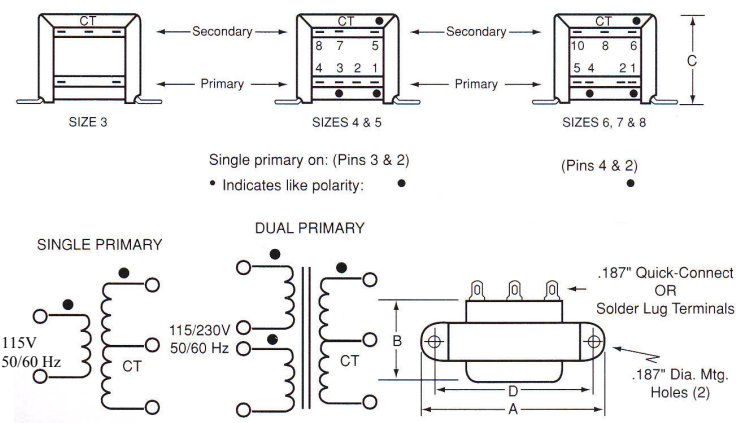
Low Voltage Rectifier Transformers



Features:

- Combination - Solder or Quick Connect Terminals (.187" x .020").
- Split bobbin construction provides for:
 - High isolation, primary to secondary
 - Low capacitive coupling minimizes line noise
 - No electro-static shield necessary
- Class B-130°C Insulation system.
- Cost effective channel frame mounting.
- Single 115V or Dual 115/230V primaries.
- Centre tapped secondary winding.
- Dielectric tested to UL/CSA standards.
- CSA certified LR16597. UL recognized E105782.

115 Volt or 115/230 Volt 50/60Hz Primary



Dimensions (inches) Size denoted by first digit in Cat. No.						
Size	VA	A	B	C	D	lb.
3	2.4	2.06	1.06	1.19	1.75	0.25
4	6	2.38	1.25	1.38	2.00	0.44
5	12	2.81	1.38	1.63	2.38	0.70
6	30	3.25	1.69	1.94	2.81	1.10
7	56	3.69	1.81	2.25	3.12	1.70
8	100	4.03	2.25	2.56	3.56	2.75

Cat. No.*		
Single 115V	Dual 115/230V	Secondary RMS Rating
TRCQ 3-10	Not Available	10VCT @ 0.25A
TRCQ 4-10	TRCQ 4-10D	10VCT @ 0.6A
TRCQ 5-10	TRCQ 5-10D	10VCT @ 1.2A
TRCQ 6-10	TRCQ 6-10D	10VCT @ 3.0A
TRCQ 7-10	TRCQ 7-10D	10VCT @ 5.0A
TRCQ 8-10	TRCQ 8-10D	10VCT @ 10A
TRCQ 3-12	Not Available	12.6VCT @ 0.2A
TRCQ 4-12	TRCQ 4-12D	12.6VCT @ 0.5A
TRCQ 5-12	TRCQ 5-12D	12.6VCT @ 1.0A
TRCQ 6-12	TRCQ 6-12D	12.6VCT @ 2.5A
TRCQ 7-12	TRCQ 7-12D	12.6VCT @ 4.0A
TRCQ 8-12	TRCQ 8-12D	12.6VCT @ 8.0A
TRCQ 3-16	Not Available	16VCT @ 0.15A
TRCQ 4-16	TRCQ 4-16D	16VCT @ 0.4A
TRCQ 5-16	TRCQ 5-16D	16VCT @ 0.8A
TRCQ 6-16	TRCQ 6-16D	16VCT @ 2.0A
TRCQ 7-16	TRCQ 7-16D	16VCT @ 3.5A
TRCQ 8-16	TRCQ 8-16D	16VCT @ 6.25A
TRCQ 3-20	Not Available	20VCT @ 0.12A
TRCQ 4-20	TRCQ 4-20D	20VCT @ 0.3A
TRCQ 5-20	TRCQ 5-20D	20VCT @ 0.6A
TRCQ 6-20	TRCQ 6-20D	20VCT @ 1.5A
TRCQ 7-20	TRCQ 7-20D	20VCT @ 2.8A
TRCQ 8-20	TRCQ 8-20D	20VCT @ 5.0A
TRCQ 3-24	Not Available	24VCT @ 0.1A
TRCQ 4-24	TRCQ 4-24D	24VCT @ 0.25A
TRCQ 5-24	TRCQ 5-24D	24VCT @ 0.5A
TRCQ 6-24	TRCQ 6-24D	24VCT @ 1.25A
TRCQ 7-24	TRCQ 7-24D	24VCT @ 2.4A
TRCQ 8-24	TRCQ 8-24D	24VCT @ 4.0A
TRCQ 3-28	Not Available	28VCT @ 0.085A
TRCQ 4-28	TRCQ 4-28D	28VCT @ 0.2A
TRCQ 5-28	TRCQ 5-28D	28VCT @ 0.42A
TRCQ 6-28	TRCQ 6-28D	28VCT @ 1.1A
TRCQ 7-28	TRCQ 7-28D	28VCT @ 2.0A
TRCQ 8-28	TRCQ 8-28D	28VCT @ 3.6A
TRCQ 3-36	Not Available	36VCT @ 0.065A
TRCQ 4-36	TRCQ 4-36D	36VCT @ 0.17A
TRCQ 5-36	TRCQ 5-36D	36VCT @ 0.35A
TRCQ 6-36	TRCQ 6-36D	36VCT @ 0.85A
TRCQ 7-36	TRCQ 7-36D	36VCT @ 1.5A
TRCQ 8-36	TRCQ 8-36D	36VCT @ 2.8A
TRCQ 3-48	Not Available	48VCT @ 0.05A
TRCQ 4-48	TRCQ 4-48D	48VCT @ 0.125A
TRCQ 5-48	TRCQ 5-48D	48VCT @ 0.25A
TRCQ 6-48	TRCQ 6-48D	48VCT @ 0.63A
TRCQ 7-48	TRCQ 7-48D	48VCT @ 1.2A
TRCQ 8-48	TRCQ 8-48D	48VCT @ 2.0A
TRCQ 3-56	Not Available	56VCT @ 0.045A
TRCQ 4-56	TRCQ 4-56D	56VCT @ 0.11A
TRCQ 5-56	TRCQ 5-56D	56VCT @ 0.22A
TRCQ 6-56	TRCQ 6-56D	56VCT @ 0.54A
TRCQ 7-56	TRCQ 7-56D	56VCT @ 1.0A
TRCQ 8-56	TRCQ 8-56D	56VCT @ 1.8A
TRCQ 3-120	Not Available	120VCT @ 0.05A
TRCQ 4-120	TRCQ 4-120D	120VCT @ 0.02A
TRCQ 5-120	TRCQ 5-120D	120VCT @ 0.05A
TRCQ 6-120	TRCQ 6-120D	120VCT @ 0.1A
TRCQ 7-120	TRCQ 7-120D	120VCT @ 0.5A
TRCQ 8-120	TRCQ 8-120D	120VCT @ 0.85A

* Suffix D designates dual primary.