

Surface Mounted Toroidal Inductors

Features:

- Ideal in applications where space and weight are critical.
- When used as inductors, they may be connected to provide higher current carrying capability with lower current carrying capability.
- When used as 1:1 transformers (coupled inductors), they provide electrical isolation.
- Standex surface mounted inductors can be manufactured with economical powdered cores or higher.
- Performance low loss cores. Other core materials are available for a variety of applications.

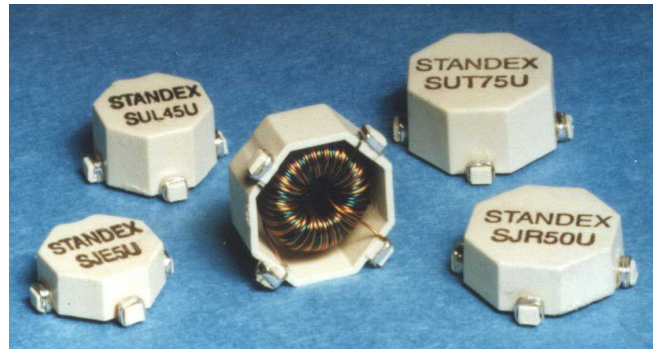
S J SERIES Economy

Part Number*	Choose between these values	PARALLEL				SERIES			
		L (Ø ADC) $\mu\text{H} \pm 20\%$	IDC Amps	L @ IDC $\mu\text{H typ.}$	DCR Ohms	L (Ø ADC) $\mu\text{H} \pm 20\%$	IDC Amps	L @ IDC $\mu\text{H typ.}$	DCR Ohms
SJE1U	Minimum	1.03	8.12	0.62	0.005	4.10	4.06	2.46	0.020
SJES0U	Maximum	50.00	1.72	30.00	0.26	200.00	0.86	120.00	1.04
SJL1R7U	Minimum	1.68	7.76	1.01	0.005	6.70	3.88	4.02	0.019
SJL123U	Maximum	122.50	0.90	73.50	0.39	490.00	0.45	294.00	1.56
SJR29U	Minimum	2.90	5.58	1.74	0.009	11.60	2.79	6.96	0.035
SJR110U	Maximum	110.00	0.91	66.00	0.34	440.00	0.45	264.00	1.37
SJT9R5U	Minimum	9.50	3.94	5.70	0.020	38.00	1.97	22.80	0.080
SJT300U	Maximum	300.00	0.71	180.00	0.69	1,200.00	0.35	720.00	2.75

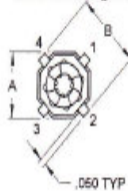
S U SERIES Low Loss

SJE0R8U	Minimum	0.78	7.60	0.47	0.004	3.10	3.80	1.86	0.016
SJE21U	Maximum	20.50	1.46	12.30	0.13	82.00	0.73	49.20	0.50
SJL1R8U	Minimum	1.80	6.86	1.08	0.005	7.20	3.43	4.32	0.020
SJL80U	Maximum	80.00	1.03	48.00	0.25	320.00	0.52	192.00	1.00
SJR2U	Minimum	2.00	7.00	1.10	0.006	8.00	3.50	4.40	0.023
SJR110U	Maximum	110.00	0.96	60.50	0.32	440.00	0.48	242.00	1.26
SJT6R3U	Minimum	6.25	5.46	3.44	0.012	25.00	2.73	13.75	0.048
SJT300U	Maximum	300.00	0.79	165.00	0.63	1,200.00	0.40	660.00	2.50

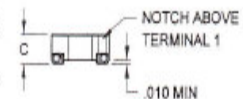
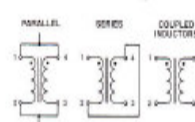
Standex catalog specifications are subject to change without notice.



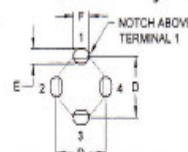
Mechanical Diagram



Connection Diagram



Recommended Layout



Series	A	B	C	D	E	F
SJE/SLE	0.350	0.450	0.165	0.390	0.120	0.150
SJL/SLL	0.350	0.450	0.235	0.390	0.120	0.150
SJR/SLR	0.450	0.550	0.180	0.490	0.120	0.160
SJT/SLT	0.450	0.550	0.250	0.490	0.120	0.160

Build your own Standard Part number!

Series

Size	Height	Width
E	.165	.350
L	.235	.350
R	.180	.450
T	.250	.450

SJ **L** **1R7** **U** **T**

Packaging

B = Bulk

T = Tape and Reel

U = Micro Henry

M = Milli Henry

Parallel Inductance

(a point is represented as an "R")

Surface Mounted Toroidal Inductors

SJ Series Economy Example Part Numbers

Standex Part Number	Parallel				Series			
	L (0ADC) $\mu\text{H} \pm 20\%$	IDC Amps	L @ IDC $\mu\text{H typ.}$	DCR ohm $\pm 20\%$	L (0ADC) $\mu\text{H} \pm 20\%$	IDC Amps	L @ IDC $\mu\text{H typ.}$	DCR ohm $\pm 20\%$
SJE1U	1.03	8.12	0.62	0.005	4.10	4.06	2.46	0.020
SJE1R3U	1.30	6.50	0.78	0.007	5.20	3.25	3.12	0.028
SJE4R1U	4.10	5.42	2.46	0.019	16.40	2.71	9.84	0.076
SJE5R2U	5.18	4.64	3.11	0.028	20.70	2.32	12.42	0.110
SJE10U	10.00	3.60	6.00	0.049	40.00	1.80	24.00	0.195
SJE13U	12.53	3.26	7.52	0.065	50.10	1.63	30.06	0.260
SJE15U	15.38	2.96	9.23	0.088	61.50	1.48	36.90	0.350
SJE19U	18.50	2.50	11.10	0.101	74.00	1.25	44.40	0.404
SJE31U	31.00	2.04	18.60	0.168	124.00	1.02	74.40	0.670
SJE50U	50.00	1.72	30.00	0.260	200.00	0.86	120.00	1.040
SJL1R7U	1.68	7.76	1.01	0.005	6.70	3.88	4.02	0.019
SJL2R8U	2.75	6.04	1.65	0.008	11.00	3.02	6.60	0.030
SJL4R1U	4.10	4.94	2.46	0.012	16.40	2.47	9.84	0.047
SJL5R8U	5.75	4.18	3.45	0.018	23.00	2.09	13.80	0.070
SJL8R8U	8.75	3.39	5.25	0.027	35.00	1.70	21.00	0.106
SJL15U	15.00	2.59	9.00	0.045	60.00	1.29	36.00	0.180
SJL21U	21.25	2.17	12.75	0.066	85.00	1.09	51.00	0.265
SJL31U	30.75	1.81	18.45	0.098	123.00	0.91	73.80	0.390
SJL49U	49.00	1.43	29.40	0.155	196.00	0.72	117.60	0.620
SJL82U	81.75	1.11	49.05	0.255	327.00	0.56	196.20	1.020
SJL123U	122.50	0.90	73.50	0.390	490.00	0.45	294.00	1.560
SJR2R9U	2.90	5.58	1.74	0.009	11.60	2.79	6.96	0.035
SJR4U	4.00	4.78	2.40	0.013	16.00	2.39	9.60	0.050
SJR9U	9.00	3.18	5.40	0.025	36.00	1.59	21.60	0.100
SJR13U	12.50	2.68	7.50	0.036	50.00	1.34	30.00	0.142
SJR21U	20.50	2.09	12.30	0.058	82.00	1.05	49.20	0.230
SJR75U	74.50	1.10	44.70	0.225	298.00	0.55	178.80	0.900
SJR110U	110.00	0.91	66.00	0.343	440.00	0.45	264.00	1.370
SJT9R5U	9.50	3.94	5.70	0.020	38.00	1.97	22.80	0.080
SJT16U	16.00	3.04	9.60	0.033	64.00	1.52	38.40	0.130
SJT21U	20.50	2.68	12.30	0.045	82.00	1.34	49.20	0.180
SJT34U	34.00	2.09	20.40	0.075	136.00	1.05	81.60	0.300
SJT76U	76.00	1.40	45.60	0.173	304.00	0.70	182.40	0.690
SJT196U	196.00	0.87	117.60	0.450	784.00	0.44	470.40	1.800
SJT300U	300.00	0.71	180.00	0.688	1200.00	0.35	720.00	2.750

SU Series Low Loss Example Part Numbers

Standex Part Number	Parallel				Series			
	L (0ADC) $\mu\text{H} \pm 20\%$	IDC Amps	L @ IDC $\mu\text{H typ.}$	DCR ohm $\pm 20\%$	L (0ADC) $\mu\text{H} \pm 20\%$	IDC Amps	L @ IDC $\mu\text{H typ.}$	DCR ohm $\pm 20\%$
SUE0R8U	0.78	7.60	0.47	0.004	3.10	3.80	1.86	0.016
SUE1R1U	1.05	6.50	0.63	0.006	4.20	3.25	2.52	0.023
SUE1R7U	1.73	5.06	1.04	0.010	6.90	2.53	4.14	0.038
SUE2R1U	2.13	4.56	1.28	0.013	8.50	2.28	5.10	0.050
SUE4R2U	4.18	3.26	2.51	0.023	16.70	1.63	10.02	0.092
SUE6R2U	6.15	2.68	3.69	0.035	24.60	1.34	14.76	0.140
SUE8R5U	8.50	2.28	5.10	0.050	34.00	1.14	20.40	0.200
SUE13U	13.25	1.82	7.95	0.079	53.00	0.91	31.80	0.315
SUE21U	20.50	1.46	12.30	0.125	82.00	0.73	49.20	0.500
SUL1R8U	1.80	6.86	1.08	0.005	7.20	3.43	4.32	0.020
SUL2R5U	2.45	5.88	1.47	0.007	9.80	2.94	5.88	0.029
SUL4U	4.05	4.56	2.43	0.012	16.20	2.28	9.72	0.046
SUL6U	6.00	3.74	3.60	0.018	24.00	1.87	14.40	0.072
SUL9R8U	9.75	2.94	5.85	0.028	39.00	1.47	23.40	0.112
SUL15U	14.50	2.42	8.70	0.044	58.00	1.21	34.80	0.175
SUL20U	20.00	2.06	12.00	0.063	80.00	1.03	48.00	0.250
SUL31U	31.25	1.65	18.75	0.098	125.00	0.83	75.00	0.390
SUL51U	51.25	1.28	30.75	0.160	205.00	0.64	123.00	0.640
SUL80U	80.00	1.03	48.00	0.250	320.00	0.52	192.00	1.000
SUR2U	2.00	7.00	1.10	0.006	8.00	3.50	4.40	0.023
SUR5R1U	5.13	4.44	2.82	0.014	20.50	2.22	11.28	0.057
SUR8U	8.00	3.56	4.40	0.023	32.00	1.78	17.60	0.090
SUR9U	9.00	3.38	4.95	0.024	36.00	1.69	19.80	0.095
SUR13U	12.50	2.84	6.88	0.035	50.00	1.42	27.50	0.140
SUR21U	20.50	2.22	11.28	0.058	82.00	1.11	45.10	0.230
SUR28U	27.50	1.92	15.13	0.079	110.00	0.96	60.50	0.315
SUR50U	50.00	1.42	27.50	0.135	200.00	0.71	110.00	0.540
SUR75U	74.50	1.17	40.98	0.213	298.00	0.58	163.90	0.850
SUR110U	110.00	0.96	60.50	0.315	440.00	0.48	242.00	1.260
SUT6R3U	6.25	5.46	3.44	0.012	25.00	2.73	13.75	0.048
SUT11U	10.75	4.18	5.91	0.020	43.00	2.09	23.65	0.080
SUT15U	15.00	3.54	8.25	0.029	60.00	1.77	33.00	0.115
SUT25U	25.00	2.74	13.75	0.047	100.00	1.37	55.00	0.188
SUT38U	37.50	2.24	20.63	0.073	150.00	1.12	82.50	0.290
SUT59U	59.25	1.78	32.59	0.116	237.00	0.89	130.35	0.462
SUT82U	81.50	1.52	44.83	0.161	326.00	0.76	179.30	0.645
SUT125U	125.00	1.22	68.75	0.250	500.00	0.61	275.00	1.000
SUT203U	202.50	0.96	111.38	0.425	810.00	0.48	445.50	1.700
SUT300U	300.00	0.79	165.00	0.625	1200.00	0.40	660.00	2.500