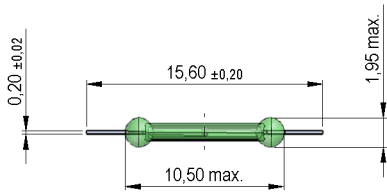
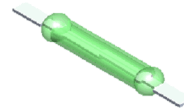


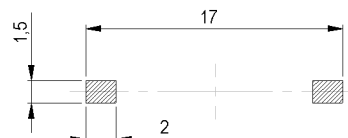
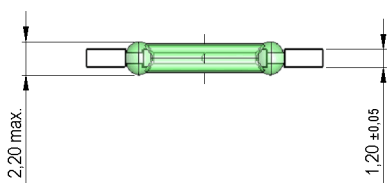
Dimensions mm[inch]
tolerances according to DIN ISO 2768-m
Toleranzen gem. DIN ISO 2768-m



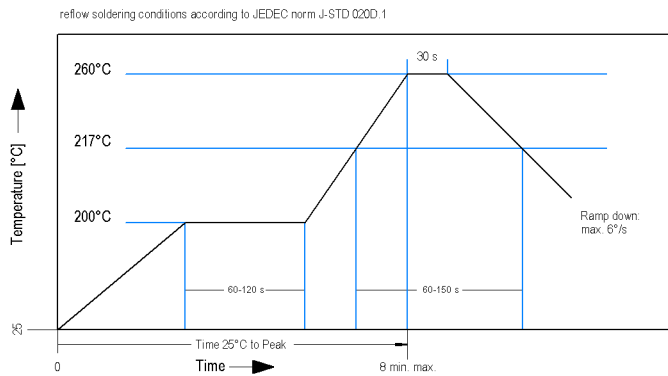
Isometric
Scale 2:1
Maßstab 2:1



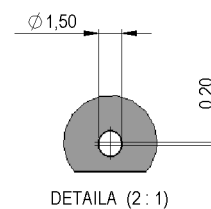
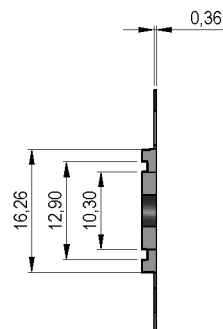
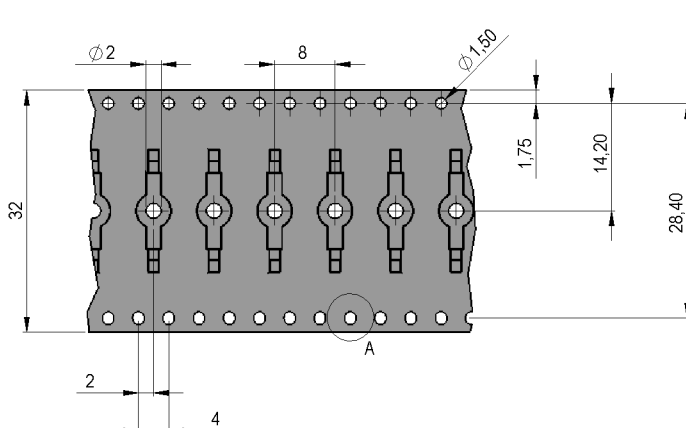
Recommended PCB Pad Layout



Solder Reflow Profile



Packaging





Europe: +49 / 7731 8399 0 | Email: info@standexmeder.com
 USA: +1 / 508 295 0771 | Email: salesusa@standexmeder.com
 Asia: +852 / 2955 1682 | Email: salesasia@standexmeder.com

Item No.:
9231350011
 Item:
MK23-35-A-1

Magnetic properties	Conditions	Min	Typ	Max	Unit
Pull-In excitation (Reference value)	Reed switch unmodified measured in coil- "define operation"	5		10	AT
Test equipment	Testing 100%	KMS-02			
Pull-In excitation (modified contact)	Reed switch modified phys. conditioned tolerance +/- 1 AT	14		37	AT
Test equipment		KMS-11 + AP051			

Contact data 35	Conditions	Min	Typ	Max	Unit
Contact - No.		35			
Contact-form		A			
Contact-material		Ruthenium			
Contact rating	Any DC combination of V & A not to exceed their individual max.'s			15	W
Switching voltage (<10AT)	DC or Peak AC			100	V
Switching current	DC or Peak AC			1	A
Carry current	DC or Peak AC			1,25	A
Contact resistance static	Measured with 40% overdrive Start Value			150	mOhm
Contact resistance dynamic	Maximum value 1,5 ms after excitation Start Value			200	mOhm
Contact resistance dynamic	Difference value 1,5 ms after excitation			20	mOhm
Insulation resistance	RH <45 %, 100 V test voltage	1.000			GOhm
Breakdown voltage (<10 AT)	according to EN 60255-5	100			VDC
Operate time incl. bounce	measured with 40% overdrive			0,5	ms
Release time	measured with no coil excitation			0,1	ms
Capacity	@ 10 kHz across open switch		0,3		pF

Special Product Data	Conditions	Min	Typ	Max	Unit
Approval					
Reach / RoHS conformity				yes	
Remark					

Modified dimensions	Conditions	Min	Typ	Max	Unit
total length - SMD			15,6		mm

Environmental data	Conditions	Min	Typ	Max	Unit
Shock	1/2 sine, duration 11ms, in 3 axis			50	g
Vibration	from 10 - 2000 Hz			20	g
Operating temperature		-40		130	°C
Storage temperature		-55		130	°C
Soldering Temperature T _{sold}	Reflow acc.IPC/JEDEC J-STD-020D.1			260	°C

General data	Conditions	Min	Typ	Max	Unit
Packaging					Tape & Reel 2500 pcs.

Modifications in the sense of technical progress are reserved

Designed at: 28.01.15 Designed by: WKOVACS
 Last Change at: Last Change by:

Approval at: 29.01.15 Approval by: DKUECHLER
 Approval at: Approval by:

Rev. No.: 01