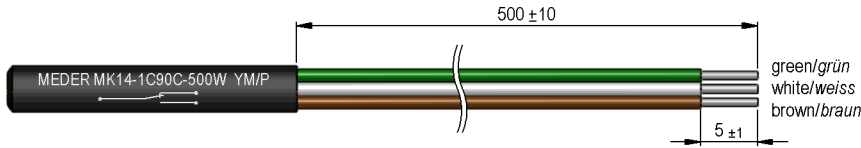
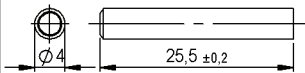


**Dimensions mm[inch]**  
 tolerances acc. to DIN ISO 2768-m  
 Toleranzen gem. DIN ISO 2768-m

**Isometric**  
 Scale 1:2  
 Maßstab 1:2



**Housing**



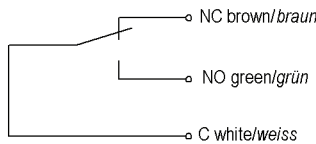
**Cable**

single wires LIYv 0,14 mm<sup>2</sup>  
 colour of wires: white, brown, green  
 Einzellitzen LIYv 0,14 mm<sup>2</sup>  
 Farben: weiss, braun, grün

**Terminals/Connector**

ends tinned  
 Enden verzinkt

**Schematic**



**Marking**

according to EN60062/factory code  
 gem. EN60062/Fertigungsstätte



Magnetic properties	Conditions	Min	Typ	Max	Unit
Pull-In	at 20°C	40		59	AT
Test equipment		KMS-13			

Contact data 90	Conditions	Min	Typ	Max	Unit
Contact-form		C			
Contact rating	Any DC combination of V & A not to exceed their individual max.'s			10	W
Switching voltage	DC or Peak AC/ with 40% overdrive			175	V
Switching current	DC or Peak AC/with 40% overdrive			0,5	A
Carry current	DC or Peak AC/ with 40% overdrive			1	A

Special Product Data	Conditions	Min	Typ	Max	Unit
Sensor-resistance	measured with 40% overdrive			300	mOhm
Housing material		PBT glass fibre reinforced			
Case colour		black			
Sealing compound		Polyurethan			
Reach / RoHS conformity		yes			

Environmental data	Conditions	Min	Typ	Max	Unit
Shock	1/2 sine, duration 11ms, in 3 axis			50	g
Vibration	from 10 - 2000 Hz			20	g
Operating temperature	cable not moved	-30		70	°C
Operating temperature	cable moved	-5		70	°C
Storage temperature		-30		70	°C

Cable specification	Conditions	Min	Typ	Max	Unit
Cable type		single wires			
Cable material		PVC			
Cross section		0.14 sq-mm			

General data	Conditions	Min	Typ	Max	Unit
Mounting advice		over 5m cable, a resistor is recommended.			